

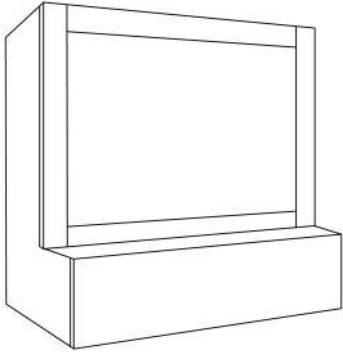


L2 Series	
Standard Widths	30, 36, 42, 48, 54 and 60 or custom
Standard Heights	24, 30, 36, 42 or custom
Removable panel	-Upper door panel is removable. – upper door is applied and has 1/8” reveal on both sides and the top
Standard Assumptions	<p>--Grain will be vertical on upper door and sides                      -- Grain on bottom door or slab will be horizontal</p> <p><b>Door RULES</b>                      Customers can define number of door panels on base and top – they do not have to be the same</p> <p><b>Door RULES</b></p> <ul style="list-style-type: none"> <li>- 30” wide hoods – Can have 1-2 panels not 3 if raised</li> <li>-6” base – if getting raised panels or baffle liner, base height increased to 8.75”</li> <li>- Single upper panel – Requires MDF</li> <li>-Panels – are all equal distance apart</li> <li>-Upper panel – 1/8” reveal on top and two sides</li> <li>- <b>Top door</b> – customer will define number of panels, hoods which are over 48” AND not MDF will have 3 equal door panels. Single doors only available when MDF</li> <li>- <b>If door on base</b>– customer will define number of panels, hoods which are over 48” AND not MDF will have 3 equal door panels. Standard base is 6” - Base door must be FLAT panel or increased to 8.75” for raised. Grain on base will be horizontal</li> <li>- Top depth not including applied door is 16”</li> </ul>
Depth of hood	22.25”
Ventilator	Stainless Moderne Mesh or Imperial liner
Baffle liner Adjustment	Increase base height from 6” to 8.75” if getting baffle
Available option	<p>--Horizontal Grain – n/c                      --Upper door delete</p>
Available customization	Yes – recommended if using aftermarket vent

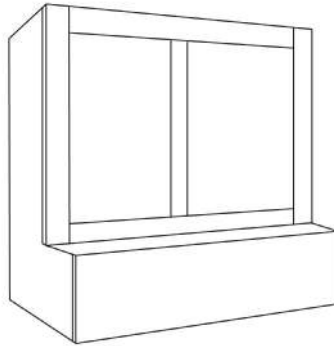
\*Please note single panel upper only available on Paint Grade MDF

Two panel upper only available on 48" wide or less unless MDF

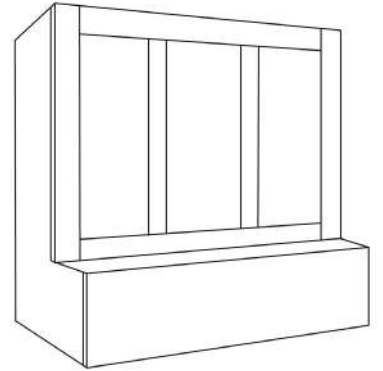
L2 – 1\*



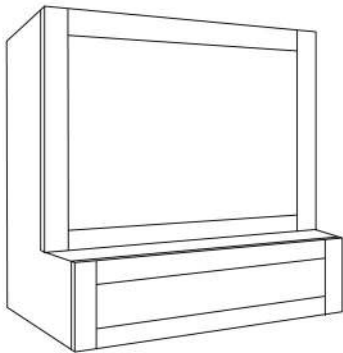
L2-2



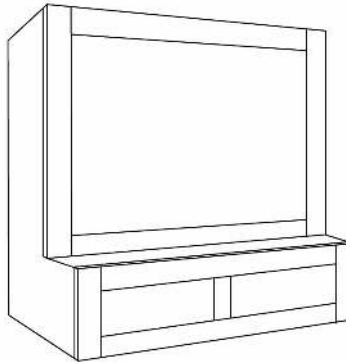
L2-3



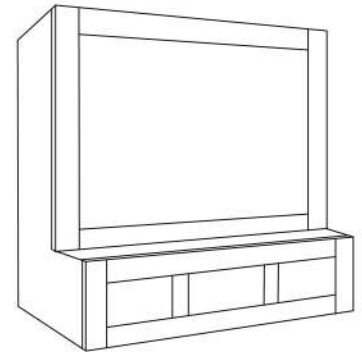
L2BP- 1-1\*



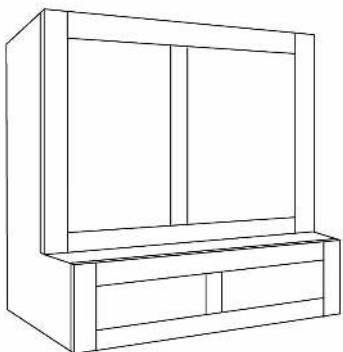
L2BP 1-2\*



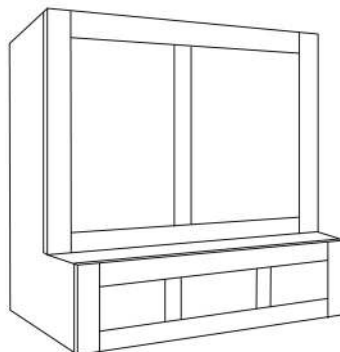
L2BP 1-3\*



L2BP- 2-2



L2BP- 2-3



L2BP- 3-3

