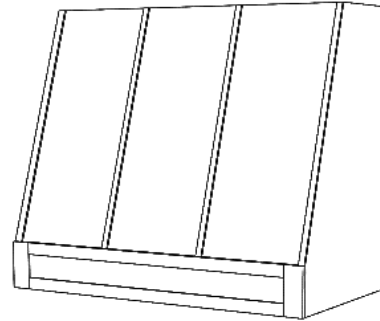
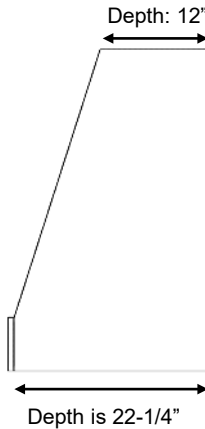
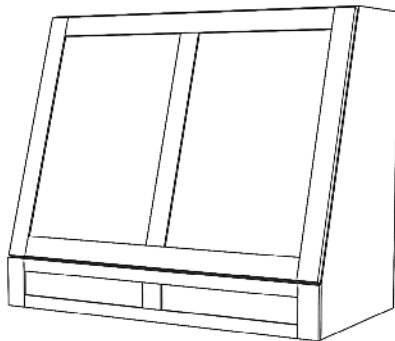
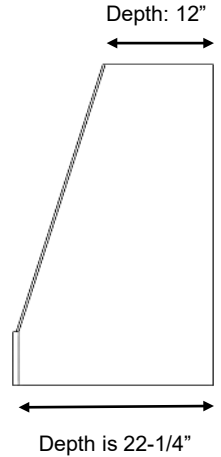


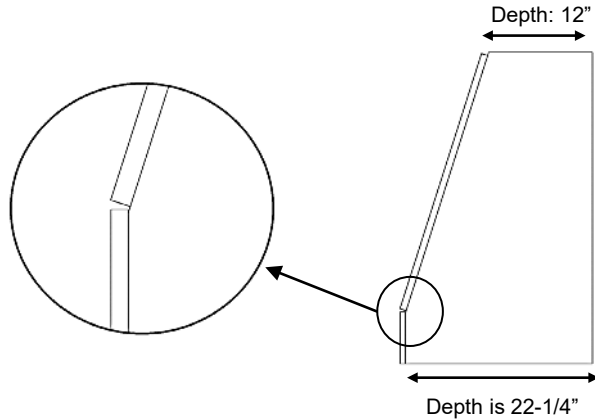
FX300 Series shown with  
Hardwood Slab (FX300)



FX300 Series shown with 1 Base Door Panel  
(FX300BP) and Optional Hardwood Battens



FX300 Series shown with 2 Base Door Panels  
and 2 Upper Door Panels (FX300BPUP 2-2)



### FX300 Series

Standard Widths	30, 36, 42, 48, 54, 60 (Reduced widths available)
Standard Heights	24, 30, 36, 42, 48 (Reduced heights available)
Removable Options	Hoods with an upper door panel option - Removable Panel is standard Hoods without an upper door panel option – No Removable Panel
Available Options	Hardwood Battens (See batten options page) Applied Molding Wrap (See options page) Applied Hardwood Wrap (See options page) 12" Top Depth can be modified by request.
Standard Assumptions	Base door panels must be flat
Ventilation	Hood will be same width as available vent width. Example: To use a 36" vent model, the hood should be a minimum of 36" wide
Grain Direction	Vertical (Base is horizontal) Hoods over 48" wide will have horizontal grain

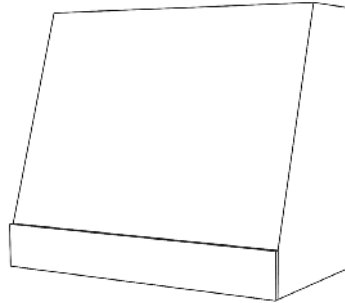
Standard Widths: 30, 36, 42, 48, 54, 60

Standard Heights: 24, 30, 36, 42, 48

### FX300

FX300

- FX300 30
- FX300 36
- FX300 42
- FX300 48
- FX300H 54\*
- FX300H 60\*



\* Hoods over 48" wide will have horizontal grain on tapered front, sides, and base.

### FX300BP

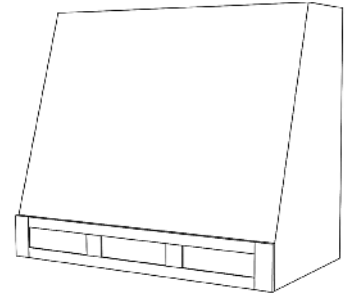
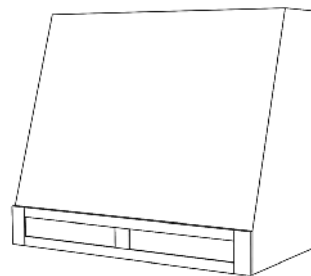
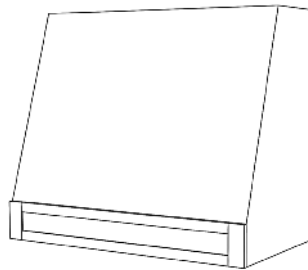
FX300BP -1

FX300BP -2

FX300BP -3

FX300BP

- FX300BP 30
- FX300BP 36
- FX300BP 42
- FX300BP 48
- FX300BP-H 54\*
- FX300BP-H 60\*



\* Hoods over 48" wide will have horizontal grain on tapered front, sides, and base.

### FX300UP

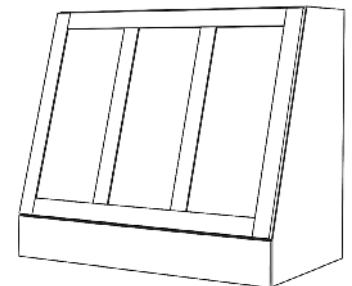
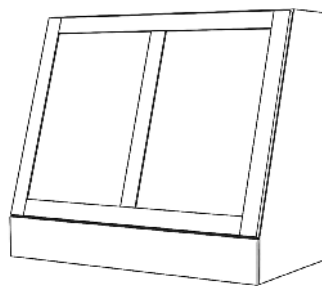
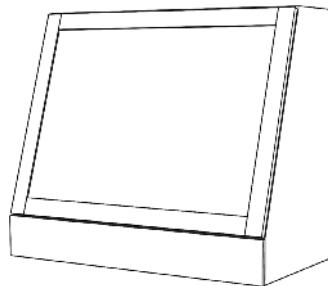
FX300UP -1 \*

FX300UP -2 \*\*

FX300UP -3

FX300UP

- FX300UP 30
- FX300UP 36
- FX300UP 42
- FX300UP 48
- FX300UP 54 \*\*
- FX300UP 60 \*\*



\* In all sizes, 1 upper panel option requires Paint Grade.

\*\* Hoods over 48" wide, 2 upper panel option requires Paint Grade .

Previously Named: FX

**STANISCI**  
DESIGN™

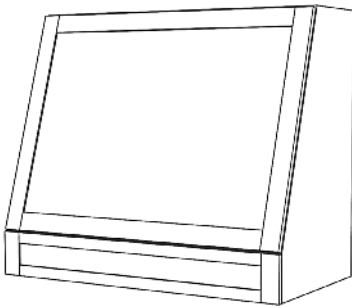
## Foxcote - FX300 Series

*In-Series*

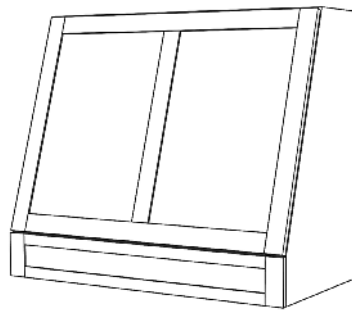
Standard Widths: 30, 36, 42, 48, 54, 60

Standard Heights: 24, 30, 36, 42, 48

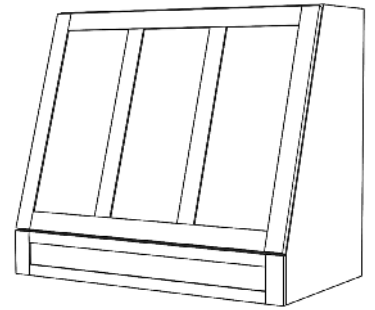
FX300BPUP 1-1\*



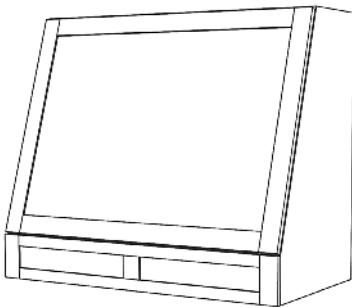
FX300BPUP 1-2\*\*



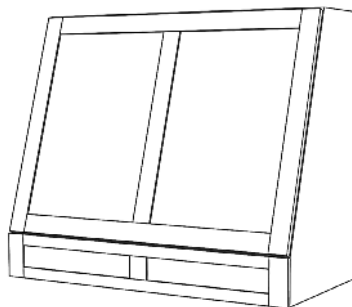
FX300BPUP 1-3



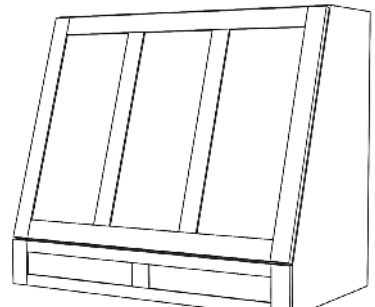
FX300BPUP 2-1\*



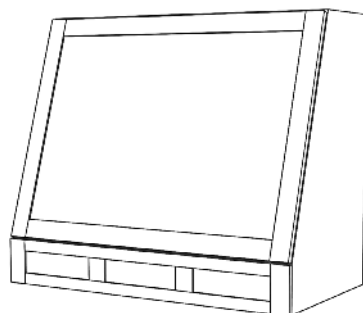
FX300BPUP 2-2\*\*



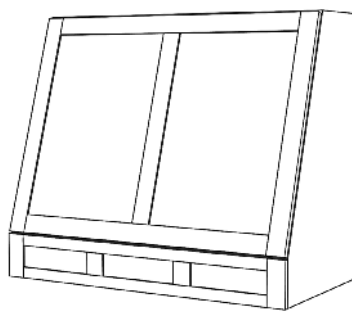
FX300BPUP 2-3



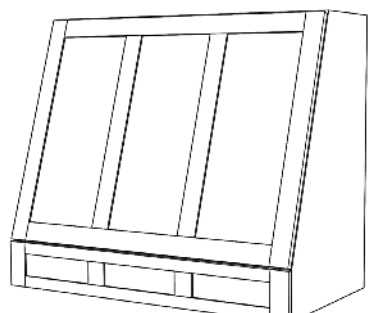
FX300BPUP 3-1\*



FX300BPUP 3-2\*\*



FX300BPUP 3-3



\* In all sizes, 1 upper panel option requires Paint Grade.

\*\* Hoods over 48" wide, 2 upper panel option requires Paint Grade .

700 South Gaspie Street • Oxford, MI 48371 • (248) 572-6880 • email: [sales@wood-hood.com](mailto:sales@wood-hood.com) • [www.wood-hood.com](http://www.wood-hood.com)