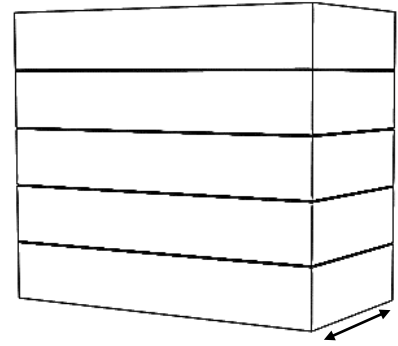


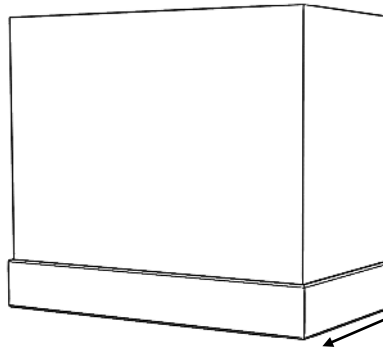
Standard BX Series (BX)

Depth is 22-1/4"



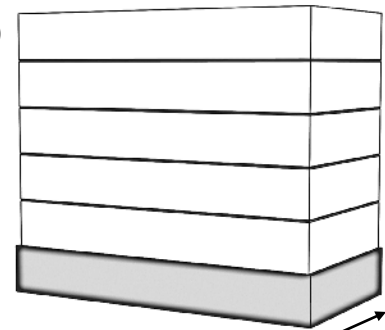
Depth is 22-1/4"

BX Series shown with Horizontal Beading (BXHB)



Depth is 22-1/4"

BX Series shown with Hardwood Base (BXHW)



Depth is 22-1/4"

BX Series shown with Horizontal Beading and Stainless Steel Base (BXHBSS)



Close up of V-groove "Horizontal bead" option

BX Series

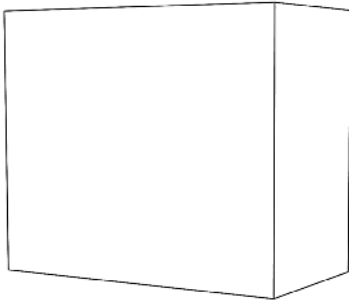
Standard Widths	30, 36, 42, 48, 54, 60 (Reduced widths available)
Standard Heights	24, 30, 36, 42, 48 (Reduced heights available)
Removable Options	Removable Top (RT) available on BXHW or BXHWB only– see modifications section.
Available Options	Applied Molding Wrap – BX and BXB only (See options page) Applied Hardwood Wrap (See options page)
Ventilation	Hood will be same width as available vent width. Example: To use a 36" vent model, the hood should be a minimum of 36" wide
Grain Direction	Horizontal

700 South Gaspie Street • Oxford, MI 48371 • (248) 572-6880 • email: sales@wood-hood.com • www.wood-hood.com

Standard Heights: 24, 30, 36, 42, 48

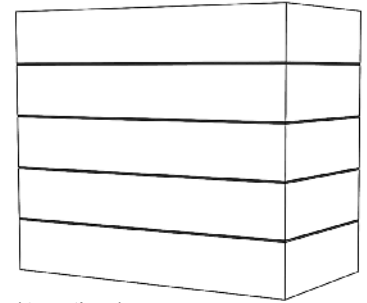
BX- Standard Hood

- BX 30
- BX 36
- BX 42
- BX 48
- BX 54
- BX 60



BX- Horizontal Beading

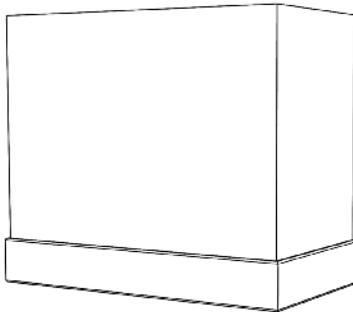
- BXHB 30
- BXHB 36
- BXHB 42
- BXHB 48
- BXHB 54
- BXHB 60



24" tall: 3 beads (4 sections)
 30-36" tall: 4 beads (5 sections)
 42-48" tall: 5 beads (6 sections)

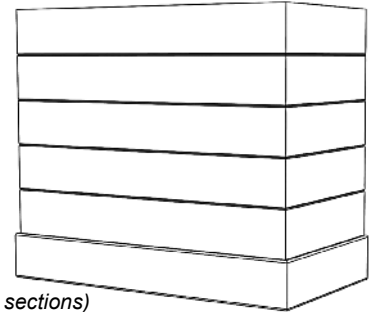
BX- HW Base

- BXHW 30
- BXHW 36
- BXHW 42
- BXHW 48
- BXHW 54
- BXHW 60



BX- Hardwood Base, Horizontal Beading

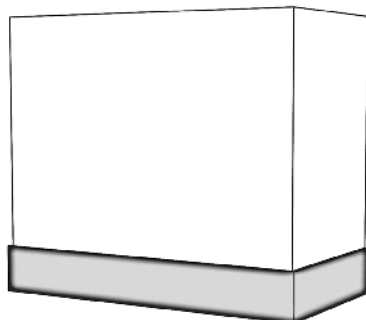
- BXHWHB 30
- BXHWHB 36
- BXHWHB 42
- BXHWHB 48
- BXHWHB 54
- BXHWHB 60



24-30" tall: 3 beads (4 sections)
 36-42" tall: 4 beads (5 sections)
 48" tall: 5 beads (6 sections)

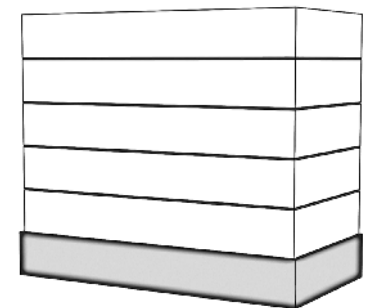
BX- SS Base

- BXSS 30
- BXSS 36
- BXSS 42
- BXSS 48
- BXSS 54
- BXSS 60



BX- SS Base, Horizontal Beading

- BXSSHB 30
- BXSSHB 36
- BXSSHB 42
- BXSSHB 48
- BXSSHB 54
- BXSSHB 60



24-30" tall: 3 beads (4 sections)
 36-42" tall: 4 beads (5 sections)
 48" tall: 5 beads (6 sections)